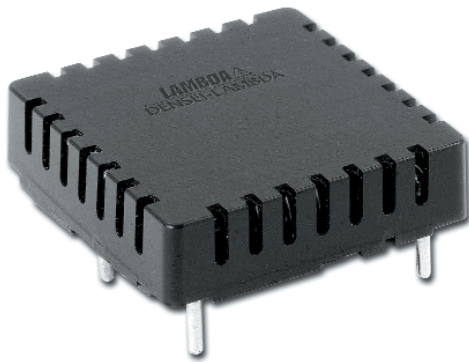


PAN Series

20A, 48VDC pcb mount EMI Filter

RoHS



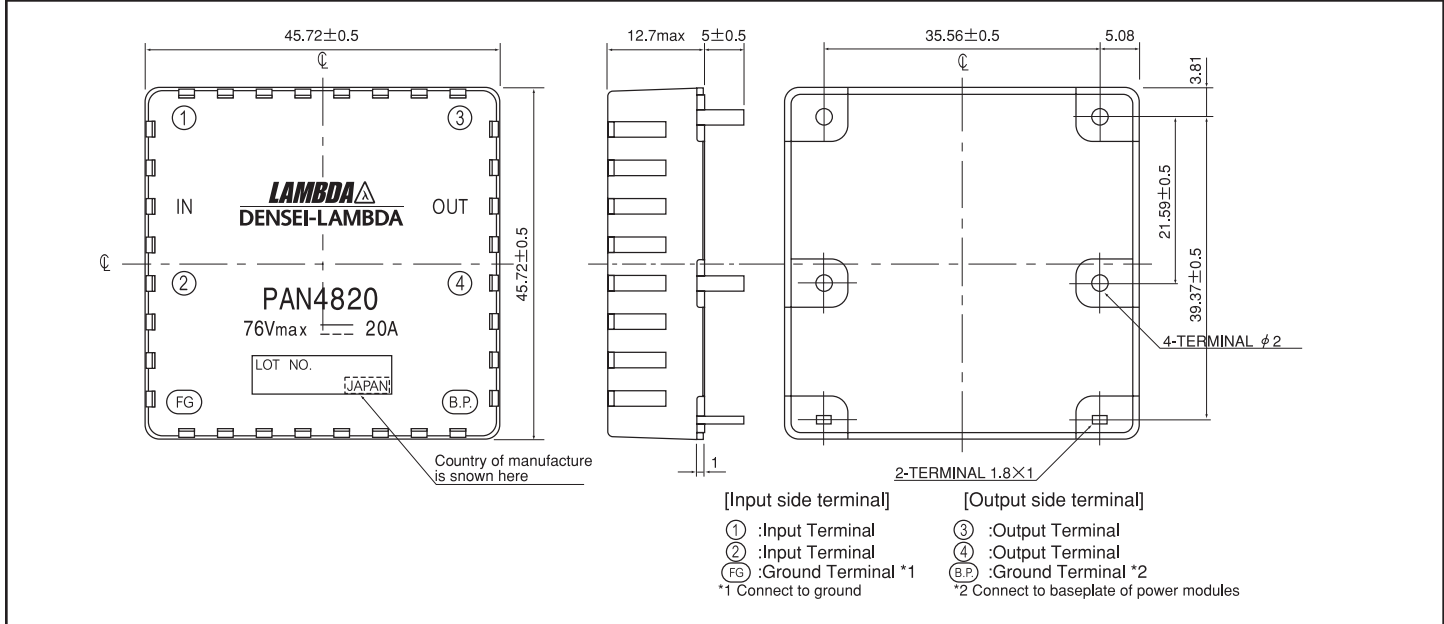
Features

- ◆ Compact Size
- ◆ PCB Mount
- ◆ Conforms to UL1950, CSA950, EN60950
- ◆ Suitable for use with Lambda's PAF Series

Specifications

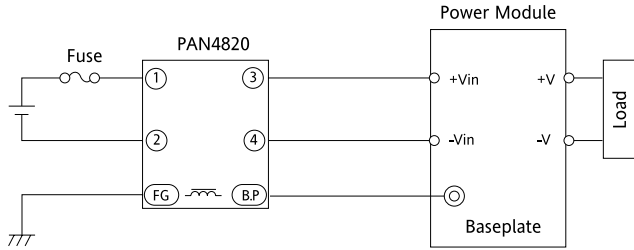
MODELS		PAN4820
ITEMS		
Rated Voltage	VDC	76VDC Max
Rated Current	A	20A
Test Voltage (For 1 min.)	V	Terminals to Case: 1500VDC; Between terminals: 100VDC
Isolation Resistance	MΩ	100MΩ minimum (terminals to case, 500VDC)
Leakage Current	mA	Not Applicable
DC Resistance	mΩ	6
Operating Temperature	°C	-40 to +100 (see derating curve)
Storage Temperature	°C	-40 to +100
Operating Humidity	-	30 to 95% RH (non condensing)
Storage Humidity	-	10 to 95% RH (non condensing)
Vibration	-	10-55Hz sweep for 1 minute Amplitude 0.825mm (max 49m/s ² , X, Y, Z (1 hour each))
Safety Standards	-	Conforms to UL60950, CSA60950, EN60950
Weight (Typ)	g	45
Warranty	-	1 Year

Outline Drawing

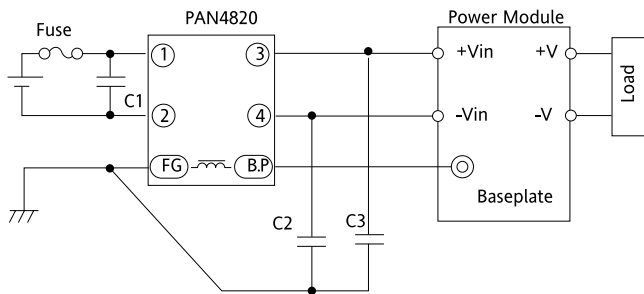


Circuit Connection 1

◆ Conform to EN55011/55022, VCCI Class A

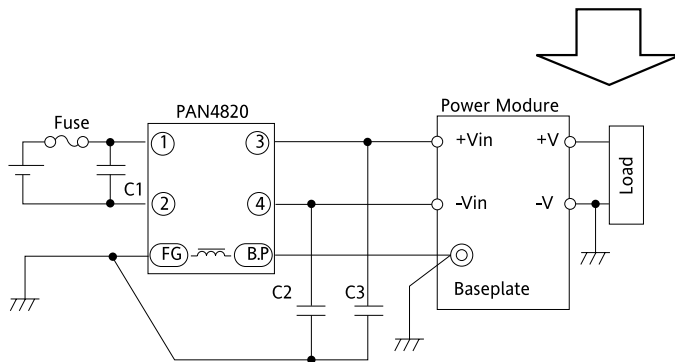
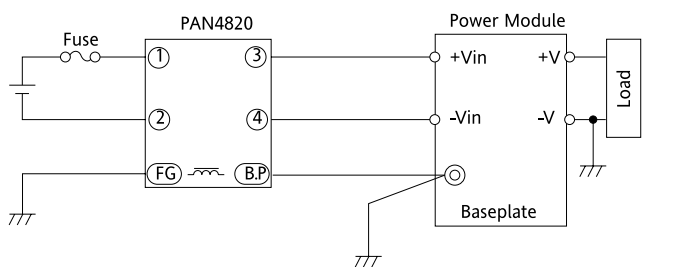


◆ Conform to EN55011/55022, VCCI Class B



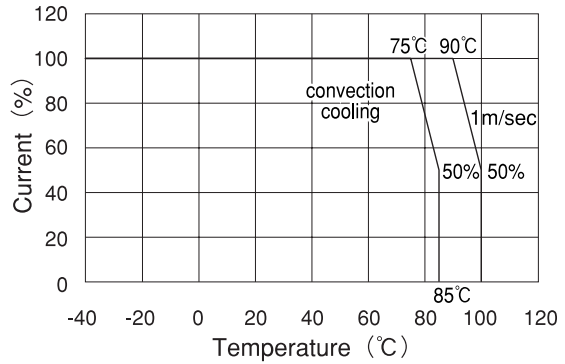
Recommended Values C1: 1μF 220V Ceramic Capacitor)
C2,3: 0.1μF 7 Film or Ceramic Capacitor)

Circuit Connection 2



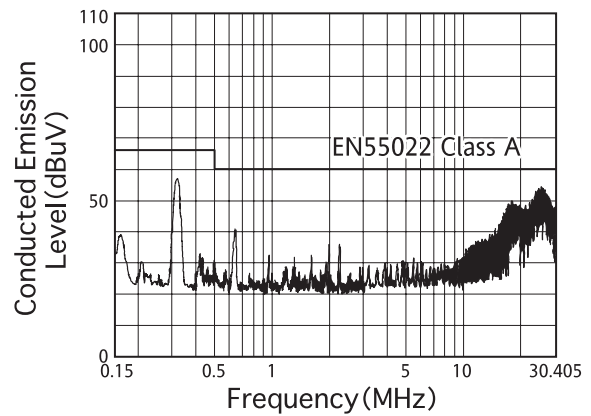
Recommended Values C1: 1μF 220V Ceramic Capacitor)
C2,3: 0.1μF 7 Film or Ceramic Capacitor)

Derating

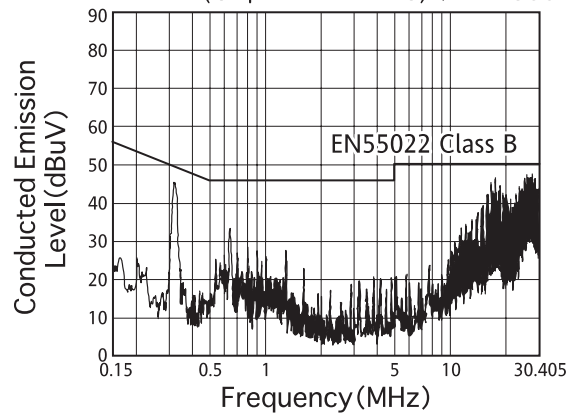


Attenuation

● CLASS-A Application
PAN4820 + PAF500F



● CLASS-B Application
PAN4820 + adding external components
(Capacitor: Net 3) + PAF500F



For Additional Information, please visit
us.tdk-lambda.com/lp/products/pan-series.htm